



CERTIFICATE OF ANALYSIS

PRODUCT	Glow (GHK-Cu Blend)	SPEC	GH 50mg · TB 10mg · BP 10mg / 3ml
LOT NO.	C-Glow70-3.0-20251205	MFG DATE	2025.12.05
STORAGE	Protected from light, Store at 25°C for transportation; Store in a dark place and in a sealed container at 2-8°C for long term storage. Do not freeze.		

TEST ITEMS	ACCEPTANCE CRITERIA	TEST RESULTS
DESCRIPTION		
Appearance	Colorless to light yellow solution	Conforms
IDENTIFICATION		
HPLC Identification	The retention time of the major peak of the Sample solution corresponds to that of the Standard solution, as obtained in the Assay.	Conforms
TEST		
pH	6.5~7.5	7.06
Phenol Content	4.5mg/mL ~ 5.5mg/mL	5.0mg/mL
Bacterial endotoxins	NMT 20 EU/mg	Less than 5 EU/mg
Sterility Tests	Meet Requirements	Conforms
ASSAY		
Content (GH)	≥15.8mg/ml (GH)	16.8mg/ml
Content (TB)	≥3.2mg/ml (TB)	3.5mg/ml
Content (BP)	≥3.2mg/ml (BP)	3.3mg/ml

**CONCLUSION:** The test results comply with the in-house specification.**Important Notice:** This product was used only for research. Not for human use.TESTED ACCORDING TO
INTERNAL QUALITY
CONTROL STANDARDS

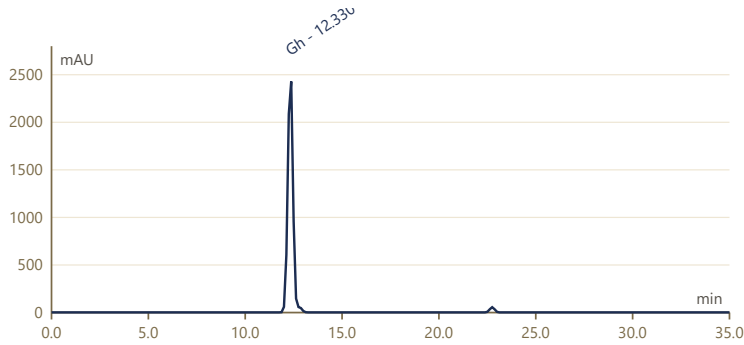
BATCH VERIFIED

PREMIUM QUALITY
RESEARCH COMPOUNDCORAVITA
BIOPHARMA LABS GROUP



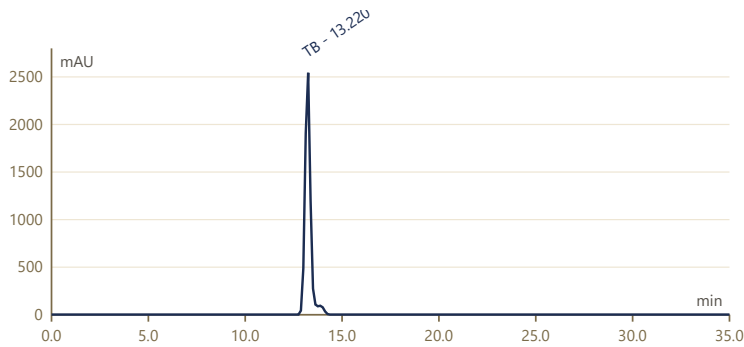
CHROMATOGRAM & RESULTS

Injection: C-GLOW70-3.0-20251205 (GH)



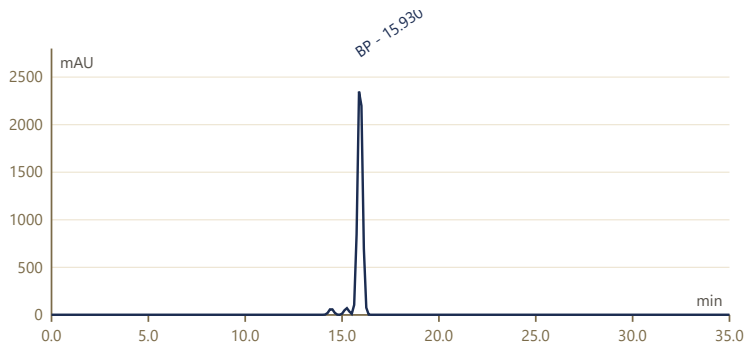
NO.	PEAK NAME	RT (MIN)	PEAK AREA (%)
1	Gh	12.330	99.94
2	—	12.800	0.04
3	—	22.750	0.02
SUM:			100.00

Injection: C-GLOW70-3.0-20251205 (TB)



NO.	PEAK NAME	RT (MIN)	PEAK AREA (%)
1	TB	13.220	99.24
2	—	13.450	0.34
3	—	13.600	0.18
4	—	13.820	0.15
5	—	13.990	0.09
SUM:			100.00

Injection: C-Glow70-3.0-20251205 (BP)



NO.	PEAK NAME	RT (MIN)	PEAK AREA (%)
1	—	14.440	0.38
2	—	15.230	0.61
3	BP	15.930	99.02
SUM:			100.00



TESTED ACCORDING TO
INTERNAL QUALITY
CONTROL STANDARDS



BATCH VERIFIED



PREMIUM QUALITY
RESEARCH COMPOUND



CORAVITA
BIOPHARMA LABS GROUP